

THE MINISTRY OF EDUCATION AND SCIENCE OF THE RUSSIAN FEDERATION
FEDERAL AGENCY FOR EDUCATION
"ROSATOM" NUCLEAR ENERGY STATE CORPORATION

NATIONAL RESEARCH NUCLEAR UNIVERSITY "MEPhI"

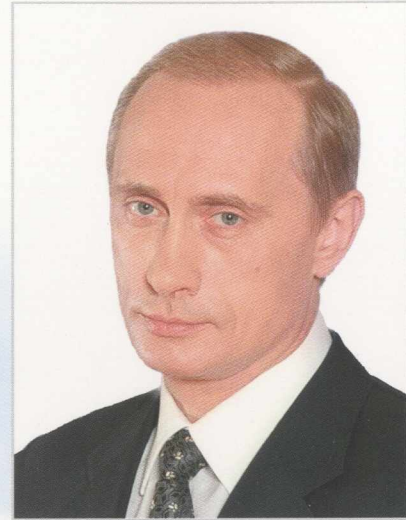


National Research Nuclear University implements a radically new approach to research and education through modernization and optimization of research and education sectors. The University main objective is to train professionals in order to provide nuclear industry as well as related industries with highly-qualified specialists.

MOSCOW – 2009

NATIONAL RESEARCH NUCLEAR UNIVERSITY "MEPhI"

Was formed by order of the President of the Russian Federation of 07.10.2008 (№1448) and by the Resolution of the Government of the Russian Federation of 08.04.2009 (№ 480-p)



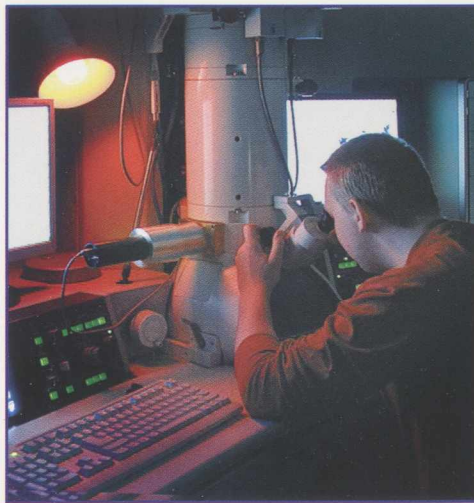
From the Order of the President of Russia:

"Accept the proposal of the Government of the Russian Federation to launch a pilot project aimed at setting up the National Research Nuclear University "MEPhI" on the basis of the State Educational Institution of higher professional education "Moscow Engineering Physics Institute(State University)"

From the Resolution of the Government of Russia:

"State as the main priority of the University activity - training of specialists in compliance with the educational programs of higher professional, post-graduate, secondary professional and additional professional educational programs as well as research and scientific activity"

The University was formed with the aim to provide nuclear industry as well as other high-technology related industries of national economy and social sector of the Russian Federation with innovative research technologies and highly-qualified specialists. It can be achieved through modernization of multilevel professional education system of the University and integration of science, education and industry.

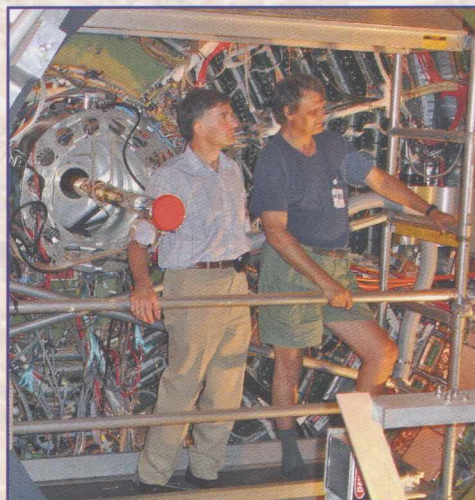


THE UNIVERSITY TOP PRIORITIES IN EDUCATION, RESEARCH AND INNOVATIVE ACTIVITIES ARE:

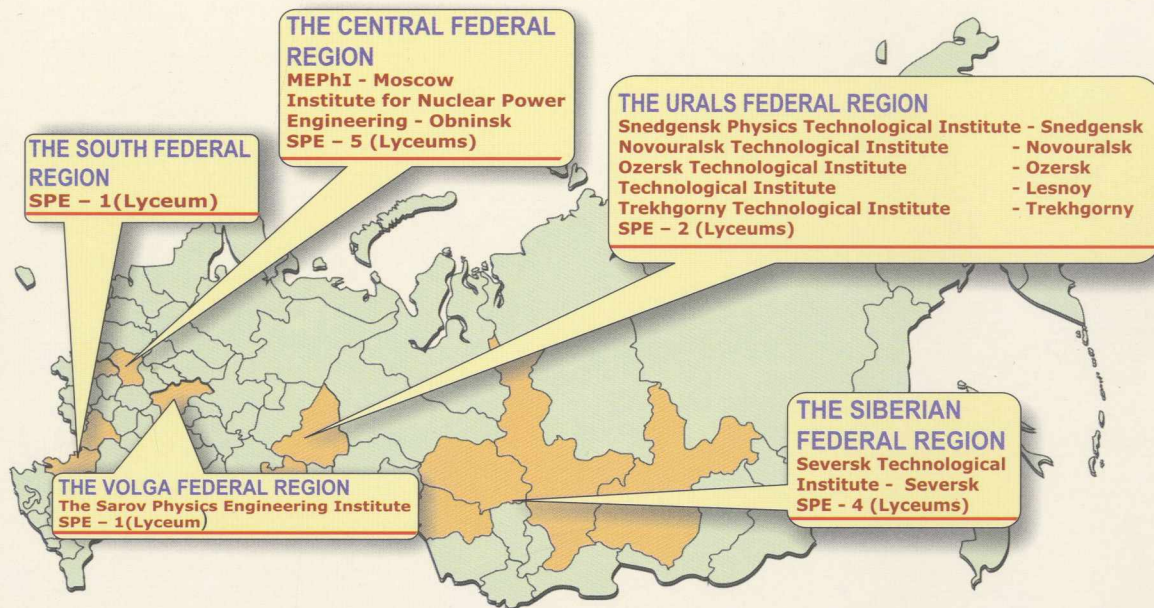
1. **Nuclear physics** (physics of atomic nucleus and particles, condensed matter physics, plasma physics, high energy physics – Higher Professional Education, hereafter HPE (4 specialties))
2. **Nuclear engineering** (nuclear installations, nuclear reactors and power plants; power generation; radiation safety; non-proliferation of nuclear materials; engineering in nuclear industry – HPE (10 specialties), Secondary Professional Education, hereafter – SPE (10 specialties))
3. **High technologies** (isotope separation, nuclear materials and radioactive study of materials, nanotechnologies, physics and chemistry technologies, nuclear medicine, laser and plasma physics technologies – HPE (15 specialties), SPE (7 specialties))
4. **Economics and national economy management with the focus on nuclear industry technologies** (investment management, international cooperation in the field of science and technology – HPE (5 specialties))
5. **Modern information technologies** (information technologies in fundamental and applied research, networks engineering, methods and systems of information security – HPE (9 specialties), SPE (5 specialties))

INTERNATIONAL ACTIVITY OF THE NATIONAL RESEARCH NUCLEAR UNIVERSITY “MEPhI”

is aimed at gaining a leading position in the world sector of research and education alongside with the development of a wide-range of educational services the University is ready to offer. To meet the objective the University expands the existing number of educational programs for foreign students; takes an active part in the development of joint educational programs, arranges student-exchange programs together with the leading nuclear research universities of the world; maintains close contacts with IAEA, European Center of Nuclear Research (CERN) as well as many other research centers and universities of the world.



The University is an integral part of a research innovative and educational regional network complex. It is made up of 22 educational institutions with 35 000 students, 8732 employees, including 2750 professors and assistants. The University conducts training in 60 HPE specialties and 45 SPE specialties. 1600 of the University staff have either a PhD degree or a doctoral degree. The site of the University with its unique research and educational facilities takes up more than 500 000 square meters.



Location and legal address:
National Research Nuclear University
"MEPhI"
31, Kashirskoye shosse,
115409 - Moscow, Russia

Contacts:
+7 (495) 324-97-40 (Rector's office)
+7 (495) 324-84-00 (Information
service)
+7 (495) 324-21-11 (fax)

Web-site: www.mephi.ru