



Search for the double-beta decay of ^{82}Se to the excited states of ^{82}Kr with NEMO-3

NEMO-3 Collaboration

R. Arnold^a, C. Augier^b, A.S. Barabash^c, A. Basharina-Freshville^d, S. Blondel^b, S. Blot^e, M. Bongrand^b, D. Boursette^b, R. Breier^t, V. Brudanin^{f,g}, J. Busto^h, A.J. Caffreyⁱ, S. Calvez^b, M. Cascella^b, C. Cerna^j, J.P. Cesar^k, A. Chapon^l, E. Chauveau^j, A. Chopra^d, L. Dawson^d, D. Duchesneau^m, D. Durand^l, V. Egorov^{f,1}, G. Eurin^{b,d}, J.J. Evans^e, L. Fajtⁿ, D. Filosofov^f, R. Flack^d, X. Garrido^b, C. Girard-Carillo^b, H. Gómez^b, B. Guillon^l, P. Guzowski^e, R. Hodákⁿ, A. Huber^j, P. Hubert^j, C. Hugon^j, S. Jullian^b, A. Klimenko^f, O. Kochetov^f, S.I. Konovalov^c, V. Kovalenko^f, D. Lalanne^b, K. Lang^k, Y. Lemièrè^l, T. Le Noblet^m, Z. Liptak^k, X.R. Liu^d, P. Loaiza^b, G. Lutter^j, M. Mackoⁿ, C. Macolino^b, F. Mamedovⁿ, C. Marquet^j, F. Mauger^l, A. Minotti^m, B. Morgan^o, J. Mott^{d,p}, I. Nemchenok^f, M. Nomachi^q, F. Nova^k, F. Nowacki^a, H. Ohsumi^r, G. Oliviero^l, R.B. Pahlka^k, V. Palusova^{j,t}, C. Patrick^d, F. Perrot^{j,*}, A. Pin^j, F. Piquemal^{j,s}, P. Povinec^t, P. Přidalⁿ, Y.A. Ramachers^o, A. Remoto^m, J.L. Reyss^u, B. Richards^d, C.L. Riddleⁱ, E. Rukhadzeⁿ, R. Saakyan^d, R. Salazar^k, X. Sarazin^b, J. Sedgbeer^v, Yu. Shitov^f, L. Simard^{b,w}, F. Šimkovic^t, A. Smetanaⁿ, K. Smolekⁿ, A. Smolnikov^f, S. Söldner-Rembold^e, B. Soulé^{j,*}, I. Šteklⁿ, J. Suhonen^x, C.S. Sutton^y, G. Szklarz^b, H. Tedjiti^h, J. Thomas^d, V. Timkin^f, S. Torre^d, V.I. Tretyak^z, V.I. Tretyak^f, V.I. Umatov^c, I. Vanushin^c, C. Vilela^d, V. Vorobel^{aa}, D. Waters^d, F. Xie^d, A. Žukauskas^{aa}

^a IPHC, ULP, CNRS/IN2P3, F-67037 Strasbourg, France

^b LAL, Univ Paris-Sud, CNRS/IN2P3, F-91405 Orsay, France

- ^c NRC “Kurchatov Institute” - ITEP, 117218 Moscow, Russia
^d UCL, London WC1E 6BT, United Kingdom
^e University of Manchester, Manchester M13 9PL, United Kingdom
^f JINR, 141980 Dubna, Russia
^g National Research Nuclear University MEPhI, 115409 Moscow, Russia
^h Aix Marseille Univ., CNRS, CPPM, Marseille, France
ⁱ Idaho National Laboratory, Idaho Falls, ID 83415, USA
^j CENBG, Université de Bordeaux, CNRS/IN2P3, F-33175 Gradignan, France
^k University of Texas at Austin, Austin, TX 78712, USA
^l LPC Caen, ENSICAEN, Université de Caen, CNRS/IN2P3, F-14050 Caen, France
^m LAPP, Université de Savoie, CNRS/IN2P3, F-74941 Annecy-le-Vieux, France
ⁿ Institute of Experimental and Applied Physics, Czech Technical University in Prague, CZ-11000 Prague, Czech Republic
^o University of Warwick, Coventry CV4 7AL, United Kingdom
^p Boston University, Boston, MA 02215, USA
^q Osaka University, 1-1 Machikaneyama Toyonaka, Osaka 560-0043, Japan
^r Saga University, Saga 840-8502, Japan
^s Laboratoire Souterrain de Modane, F-73500 Modane, France
^t FMFI, Comenius Univ., SK-842 48 Bratislava, Slovakia
^u LSCE, CNRS, F-91190 Gif-sur-Yvette, France
^v Imperial College London, London SW7 2AZ, United Kingdom
^w Institut Universitaire de France, F-75005 Paris, France
^x Jyväskylä University, FIN-40351 Jyväskylä, Finland
^y MHC, South Hadley, MA 01075, USA
^z Institute for Nuclear Research, 03028 Kyiv, Ukraine
^{aa} Charles University in Prague, Faculty of Mathematics and Physics, CZ-12116 Prague, Czech Republic

Received 14 October 2019; received in revised form 8 January 2020; accepted 14 January 2020
 Available online 21 January 2020

Abstract

The double-beta decay of ^{82}Se to the 0_1^+ excited state of ^{82}Kr has been studied with the NEMO-3 detector using 0.93 kg of enriched ^{82}Se measured for 4.75 y, corresponding to an exposure of 4.42 kg·y. A dedicated analysis to reconstruct the γ -rays has been performed to search for events in the $2e2\gamma$ channel. No evidence of a $2\nu\beta\beta$ decay to the 0_1^+ state has been observed and a limit of $T_{1/2}^{2\nu}(^{82}\text{Se}, 0_{gs}^+ \rightarrow 0_1^+) > 1.3 \times 10^{21}$ y at 90% CL has been set. Concerning the $0\nu\beta\beta$ decay to the 0_1^+ state, a limit for this decay has been obtained with $T_{1/2}^{0\nu}(^{82}\text{Se}, 0_{gs}^+ \rightarrow 0_1^+) > 2.3 \times 10^{22}$ y at 90% CL, independently from the $2\nu\beta\beta$ decay process. These results are obtained for the first time with a tracko-calorimeter, reconstructing every particle in the final state.

© 2020 Elsevier B.V. All rights reserved.

Keywords: Double beta decay; Neutrino; ^{82}Se ; Excited state

* Corresponding authors.

E-mail addresses: fperrot@cenbg.in2p3.fr (F. Perrot), soule@cenbg.in2p3.fr (B. Soulé).

¹ Deceased.

1. Introduction

The search for the neutrinoless double-beta decay ($0\nu\beta\beta$) is of major importance in neutrino and particle physics. Its observation would prove the Majorana nature of the neutrino and would be the first evidence for lepton number violation. Up to now, no evidence of such a process has been found and the best half-life limits are in the 10^{24} - 10^{26} y range [1–4]. ^{82}Se is one of the best isotopes to investigate $0\nu\beta\beta$ decay. In particular, its high $Q_{\beta\beta}$ -value of 2997.9 ± 0.3 keV [5] lies above the main backgrounds coming from natural radioactivity. There exist also well-known methods of Se isotopic enrichment through centrifugal separation. This is why ^{82}Se is the baseline isotope for past, current or future experiments such as LUCIFER [6], CUPID-0 [7] and SuperNEMO [8]. Several studies have been performed in the past to search for $0\nu\beta\beta$ decay of ^{82}Se to the ground state of ^{82}Kr and recently new limits on the half-life have been obtained with the NEMO-3 (2.5×10^{23} y [9]) and CUPID-0 experiments (3.5×10^{24} y [10]).

The double-beta decay with emission of two neutrinos ($2\nu\beta\beta$) is a second order electroweak process in the Standard Model. It allows the experimental determination of the Nuclear Matrix Elements (NME) for such processes and provides a robust test for the different nuclear models. It could constrain the quenching factor of the axial-vector coupling constant g_A and give the possibility to improve the quality of NME calculations for $0\nu\beta\beta$ decay [11–14]. This process has been observed for 11 double-beta isotopes with a range of measured half-lives between 10^{18} - 10^{24} y [15,16]. For ^{82}Se , several experiments have measured the $2\nu\beta\beta$ decay to the ground state with the most precise half-life value to date of $9.39 \pm 0.17(\text{stat}) \pm 0.58(\text{syst}) \times 10^{19}$ y measured with the NEMO-3 experiment [9].

The search for $\beta\beta$ decay to excited states is also an interesting way to study such processes. Indeed, these decays have a very clear-cut signature using the $2e1\gamma$ channel (to the 2_1^+ state) or the $2e2\gamma$ channel (to the 0_1^+ or 2_2^+ state) which can dramatically reduce the number of background events. The disadvantages are a lower $Q_{\beta\beta}$ available energy for electrons which suppresses the probability of the decay and a lower detection efficiency for electrons and γ -rays. Nevertheless, the decay to excited states is of importance to test the nuclear matrix elements. A detailed analysis for $2\nu\beta\beta$ decay of ^{100}Mo and ^{150}Nd to the excited 0_1^+ state of ^{100}Ru and ^{150}Sm , respectively, showed that corresponding NME are only suppressed by $\sim 30\%$ when compared with the NME to ground state transition [17–23].

Up to now, the $2\nu\beta\beta$ decay to excited states has only been observed for two isotopes: ^{100}Mo and ^{150}Nd with typical half-lives of 10^{20} - 10^{21} y [24]. It is important to note that this decay has been observed only to the 0_1^+ excited state (with the emission of two γ -rays) which is favoured compared to the decay to the 2_1^+ or 2_2^+ excited states. These measurements have been performed using both High Purity Germanium (HPGe) detectors by measuring only the γ -rays in the cascade [18,21,22,25–29] and “tracker-calorimeter” detectors such as NEMO-3 able to measure the energies of both electrons and γ -rays [19,30]. For ^{82}Se , there is up to now no evidence for such a decay. Stringent limits have been obtained by the LUCIFER collaboration for the $(2\nu + 0\nu)\beta\beta$ decay to various excited states of ^{82}Kr using a HPGe detector [31]. Nevertheless, this technique using only γ -rays does not allow to distinguish between $2\nu\beta\beta$ and $0\nu\beta\beta$. More recently, more stringent limits have been set by the CUPID-0 collaboration for the $0\nu\beta\beta$ decay to various excited states of ^{82}Kr using ZnSe scintillating bolometers [32].

In this work, we will present a detailed study of the ^{82}Se $2\nu\beta\beta$ and $0\nu\beta\beta$ decays to the 0_1^+ excited state of ^{82}Kr , expected to be the most favoured [33,34], with the full exposure of the NEMO-3 experiment. In this analysis, we have access to the full topology of the decay. It consists of the emission of two electrons sharing 1510.2 keV of energy and accompanied by two

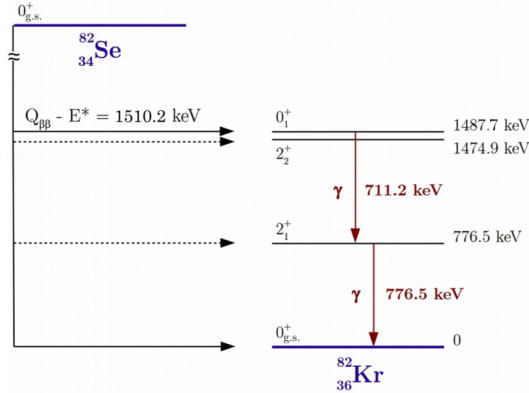


Fig. 1. Decay scheme of the ^{82}Se $\beta\beta$ decay to the 0_1^+ excited state with the emission of two electrons sharing 1510.2 keV and two prompt γ -rays with energies of 711.2 and 776.5 keV [36].

γ -rays with energies of 711.2 keV and 776.5 keV respectively, as illustrated in Fig. 1. After a presentation of the NEMO-3 detector, the ^{82}Se source foils and the associated backgrounds, we will present a dedicated analysis tool called gamma tracking (GT) developed to reconstruct efficiently the γ -rays in such a decay. Finally, we will present the results of the $2\nu\beta\beta$ and $0\nu\beta\beta$ decays of ^{82}Se to the 0_1^+ excited state of ^{82}Kr with the full NEMO-3 exposure of 4.42 kg·y.

2. NEMO-3 detector, ^{82}Se source foils and associated backgrounds

2.1. NEMO-3 detector

NEMO-3 was a detector installed in the Modane Underground Laboratory (LSM) under 4800 m water-equivalent in order to be protected against cosmic muons. It took data from February 2003 to January 2011. It consisted of a hollow cylinder divided into 20 sectors hosting thin source foils from 7 different enriched isotopes with a typical thickness of approximately 50 mg/cm² (as shown in Fig. 2). The main isotope to search for $0\nu\beta\beta$ decay was ^{100}Mo with a total mass of 6.914 kg. The second isotope of interest was ^{82}Se with a mass of 0.932 kg shared in 3 sectors. The five other isotopes studied were by decreasing order of mass: ^{130}Te (0.454 kg), ^{116}Cd (0.405 kg), ^{150}Nd (36.55 g), ^{96}Zr (9.43 g), and ^{48}Ca (6.99 g) (see [1,35] for more details).

The source foils were hung at the center of a wire chamber composed of 6180 cells operating in Geiger mode. The gas was a mixture composed of 94.85% helium, 4% ethanol, 1% argon and 0.15% of water vapour. These cells were placed inside a 25 G magnetic field produced by a solenoid surrounding the detector. Charged particles thus had a curved trajectory when crossing the tracking chamber, which allowed the identification of a negative curvature for 95% of electrons at 1 MeV. The minimal distance traveled by a particle crossing the tracker is ~ 1.1 m, which corresponds to a typical minimal time of flight of 3 ns. The resolution of the tracker was 0.5 mm transverse to the wires and 8 mm in the vertical direction for 1 MeV electrons.

A calorimeter enclosed the wire chamber. It was made from 1940 plastic scintillator blocks, each one with a typical size of $20 \times 20 \times 10$ cm³ and coupled to a low background photomultiplier (PMT) through a light guide. The calorimeter measured the kinetic energy of the particles and the time difference between two distant hits could be recorded. The blocks had an energy resolution of $6 - 7\% / \sqrt{E(\text{MeV})}$ and a time resolution of 250 ps (σ at 1 MeV).

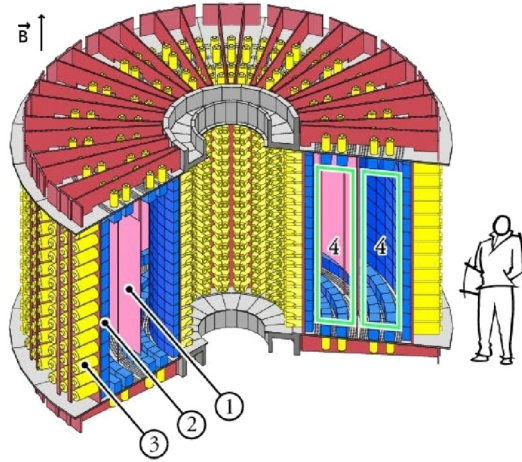


Fig. 2. Cross-sectional view of the NEMO-3 detector. The detector consists of source foils (1), scintillators (2), photomultipliers (3) and a wire chamber (4).

NEMO-3 was a unique detector as it combined tracking and calorimetry techniques. A charged particle (e^- , e^+ ...) was identified when going across and ionising the wire chamber gas. Its track was associated to an energy deposit in a calorimeter block neighbouring the last fired Geiger cell. γ -rays were identified when energy was deposited in a calorimeter block but no track was associated. Alpha particles were identified as straight, short tracks as they could not travel more than ~ 40 cm in the tracker due to their high ionisation energy loss.

In order to run in low background conditions, the NEMO-3 detector had to be protected from natural radioactivity. To do so, a passive shielding of 19 cm iron was surrounding the detector in order to stop external γ -rays. In addition, borated water, paraffin and wood were also used to moderate and absorb the environmental neutrons. For a more detailed description of the NEMO-3 detector, see [35].

2.2. ^{82}Se source

Two different batches of ^{82}Se source were used (referred to as $^{82}\text{Se}(\text{I})$ and $^{82}\text{Se}(\text{II})$). Those batches had an enrichment factor of $97.02 \pm 0.05\%$ and $96.82 \pm 0.05\%$ respectively. To produce source foils, the enriched ^{82}Se powder was mixed with polyvinyl alcohol (PVA) glue and deposited between ~ 23 μm thick Mylar foils, producing composite source foils. The total mass of the ^{82}Se isotope in NEMO-3 was 932.4 ± 5.0 g. An analysis of these ^{82}Se foils was conducted in order to search for $2\nu\beta\beta$ and $0\nu\beta\beta$ decays to ground state and is detailed in [9].

2.3. Backgrounds

With its powerful topology reconstruction ability, the NEMO-3 detector was able to identify $2e2\gamma$ events that were selected for $\beta\beta$ decay to excited states. However, some background isotopes could also produce this type of event. Among them, ^{214}Bi and ^{208}Tl decays were the main sources of background as the produced particles could carry similar energies as the β and γ particles from double beta decays to excited states. These two isotopes are β^- emitters from the ^{238}U and ^{232}Th radioactive decay chains, respectively, with Q -values of 3.27 and 4.99 MeV.

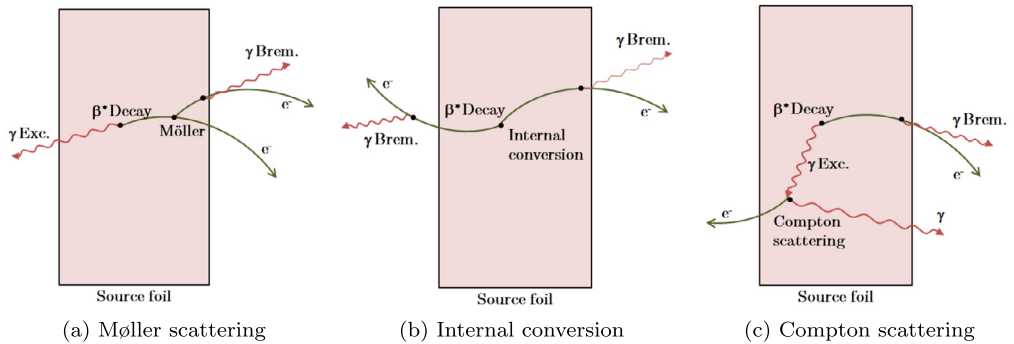


Fig. 3. Mechanisms producing $2e2\gamma$ events from internal contamination of β emitters inside the source foils. β -decay to excited state followed by Møller scattering and bremsstrahlung (3(a)), β -decay to excited state with internal conversion and double bremsstrahlung (3(b)), β -decay to excited state followed by Compton scattering and bremsstrahlung (3(c)).

Table 1

Results of the contamination measured in the ^{82}Se source foils by using independently NEMO-3 and HPGe data. All uncertainties are of statistical origin only, given at the 1σ level. The limit shown is at the 2σ level. The activities of ^{214}Bi and ^{208}Tl are derived from this independent analysis and are consistent with the ones already published in [9].

Isotope	NEMO-3 (mBq/kg)	HPGe (mBq/kg)
^{214}Bi	1.62 ± 0.05	1.2 ± 0.5
^{208}Tl	0.39 ± 0.01	0.40 ± 0.13
$^{234\text{m}}\text{Pa}$	16.7 ± 0.1	< 18
^{40}K	58.9 ± 0.2	55 ± 5

The main background contribution came from contamination in the source foils introduced during isotope production and residual contamination after isotope purification or during the foil production. This is described as *internal* contamination. In this case, those β emitting isotopes could produce two electrons coming from the same vertex via β -decay with internal conversion, β -decay followed by Møller scattering or β -decay to an excited state with a Compton scattering of the emitted photon. From these mechanisms, additional γ -rays could be produced by bremsstrahlung or from a decay to an excited state as presented in Fig. 3. Prior to their installation, the activity of ^{82}Se foils in ^{214}Bi and ^{208}Tl had been measured by low background gamma spectrometry using HPGe detectors. These small contaminations had been also measured and cross-checked by the NEMO-3 detector itself thanks to its capability to measure own background. In NEMO-3, the ^{214}Bi contamination of the foils could be studied by looking for the so called BiPo effect using ^{214}Bi and ^{214}Po sequential decay events. The β -decay of ^{214}Bi is followed by the α -decay of ^{214}Po with a half-life of $164.3 \mu\text{s}$. The analysis channel used to study such events was the $1e1\alpha(n)\gamma$ channel. ^{208}Tl decays exclusively to excited states and emits mostly 2 or 3 γ -rays (99.9%). Its contamination was thus measured through the $1e2\gamma$ channel with a high γ -rays efficiency (about 50% at 1 MeV). Results and comparison of the ^{214}Bi and ^{208}Tl activities for ^{82}Se source foils using HPGe and NEMO-3 data are presented in Table 1 (including some other minor background isotopes [9]).

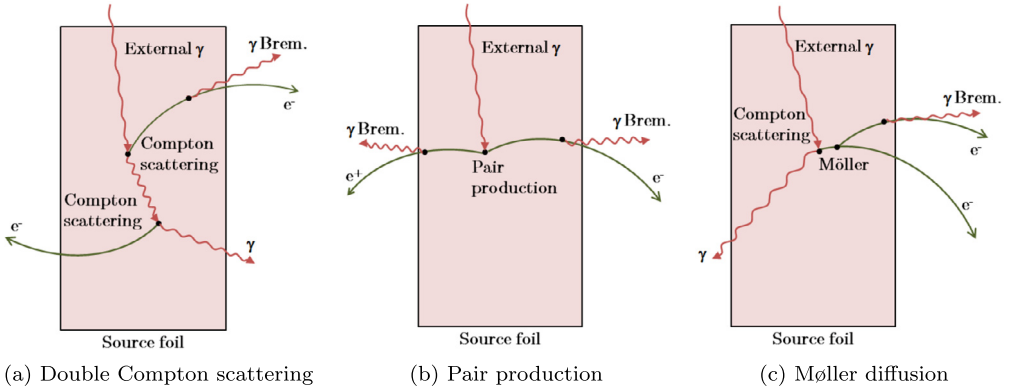


Fig. 4. Mechanisms producing $2e2\gamma$ events from external contamination of the NEMO-3 detector emitting a γ -ray interacting inside the source foil. Double Compton scattering of the external γ -ray with bremsstrahlung in 4(a), pair production from the external γ -ray with double bremsstrahlung effects and poor reconstruction of the positron in 4(b), Compton scattering of the external γ -ray followed by a Møller scattering of the electron and a bremsstrahlung in 4(c).

Finally, $2\nu\beta\beta$ decay to the ground state was also considered as a background source for $2\nu\beta\beta$ decay to excited states. When two electrons were produced, two extra γ -rays could be emitted via bremsstrahlung. A $2e2\gamma$ event was thus detected while excited states were not involved.

In addition to the *internal* contamination of the source foils, radioactivity from other components of the detector can produce background events, leading to γ -rays. These γ -rays then interact with the source foil and two electrons coming from the same vertex can then be reconstructed if there is either pair production with misreconstruction of the positron track, double Compton scattering or simple Compton scattering followed by Møller scattering of the produced electron. In the case of pair production, there can be annihilation of the positron which produces two photons. Considering that γ -ray interactions are involved in all those mechanisms, they have to be taken into account in the search of the $2\nu\beta\beta$ and $0\nu\beta\beta$ decay to the 0_1^+ excited state, with 2 γ -rays emitted in cascade. The different processes responsible for background production are described in Fig. 4. The radioactivity of these external elements was first screened by low background γ -spectrometry. Also, when background isotopes produce a γ -ray, it can interact close to the surface of a calorimeter block and produce an electron. The latter crosses the whole wire chamber including the source foil. The initial γ -ray can also deposit energy in the calorimeter before interacting with the source and producing an electron. The contamination of external elements can thus be measured through two channels: crossing electron or (γ, e) external, i.e. Compton scattering in a scintillator block, producing a γ -ray energy deposit, followed by a Compton scattering in the source foil, emitting an electron detected in another scintillator block. An *external* background model was produced and can be found in [38].

A specific *external* background is the *radon* background. It comes from ^{222}Rn , a gaseous isotope in the ^{238}U chain. ^{222}Rn can be introduced via several mechanisms including emanation from detector materials, diffusion from laboratory air through detector seals or contamination of the wire chamber gas. This is only possible because of its long half-life of 3.82 days. Once inside the detector, mainly positive ions are produced from the radon decays. Because of their charge, they can drift and be deposited on the source foils or tracker wires. There, they decay into ^{214}Bi near the source material. This contamination can then be observed through the $1e1\alpha(n)\gamma$ channel.

For the first 18 months of data-taking, there was a relatively high level of ^{222}Rn inside the detector. To reduce it, an anti-radon tent was built around the detector reducing the radon level inside the wire chamber volume by a factor ~ 6 [1]. The higher radon activity data-taking period is referred to as Phase 1 and the lower activity period that came after as Phase 2.

Both data and Monte Carlo simulations (MC) of signal and background are processed by the same reconstruction algorithm. The DECAY0 event generator [39] is used for generation of initial kinematics and particles are tracked through a detailed GEANT3 based detector simulation [40].

3. Gamma tracking technique

In most double-beta-decay experiments, a crucial aspect is to precisely measure the energy of the particles. Using the unique combination of tracking and calorimetry, NEMO-3 extracts other observables (angle between two electrons, track curvature, vertex position...) allowing a good discrimination of background and signal events. In addition, one of the most important features is the measurement of the time of flight of the particles inside the detector.

When looking for double-beta decays, selecting events with two electrons from the same vertex is not a strong enough criterion as seen in section 2.3. The time of flight measurement thus allows to reject external events by testing two hypotheses: the event has an *internal* or an *external* origin. This test is made possible in NEMO-3 by the knowledge of the particle track length, energy, time of flight and the energy and time resolution (σ_t) of the calorimeter. It can be conducted for charged particles for which tracks are reconstructed but also for γ -rays coming from the same vertex.

Time of flight for electrons is thus an essential parameter when looking for double-beta decay. The next section will describe its measurement in NEMO-3 before a new method for measuring γ -ray time of flight is presented. The latter is crucial since a more accurate description of events containing γ -rays and a higher sensitivity to these events will improve the efficiency and precision in the search for decays to excited states.

3.1. Time of flight calculation

In order to construct an hypothesis on the time ordering of an event, some energy must be deposited in at least two calorimeter blocks and one particle track or more must be reconstructed inside the wire chamber. This track also has to be associated to one of the calorimeter hits. The other calorimeter hit with no associated track is identified as a γ -ray. Fig. 5 illustrates an event sketch in NEMO-3 with an electron (one reconstructed track with one calorimeter hit) and a γ -ray (only a calorimeter hit) coming from the same vertex.

Before making any time of flight calculation for an event, two hypotheses must be considered: *internal* or *external* origin. Theoretical times of flight between the vertex and the calorimeter hit (t^{th}) that should be measured by the calorimeter (for each block hit) are then calculated for both hypotheses. The sum (*external* origin) or difference (*internal* origin) of these theoretical times is compared to the difference between times actually measured by the calorimeter (t^{exp}). If the given hypothesis is favoured, then the difference noted Δt_{hyp} must be close to zero, taking into account the time resolution of NEMO-3.

Considering the example presented in Fig. 5(b), these differences for both hypotheses are expressed by the following equations:

$$\Delta t_{int} = (t_e^{th} - t_\gamma^{th}) - (t_e^{exp} - t_\gamma^{exp}) \quad (1)$$

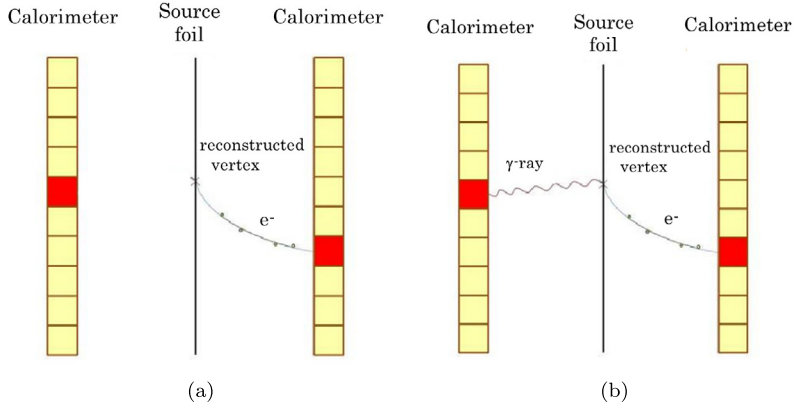


Fig. 5. Event sketch with track reconstruction (5(a)) and scintillator association (5(b)). The reconstruction defines a γ -ray as energy deposit in a scintillator without any associated track. It can link it to the vertex in Fig. 5(b).

$$\Delta t_{ext} = (t_e^{th} + t_\gamma^{th}) - (t_e^{exp} - t_\gamma^{exp}) \quad (2)$$

Nevertheless, the calculation of Δt_{hyp} is only a preliminary analysis. A more advanced study is based on the probability of time of flight and needs to take into account the uncertainties on theoretical and measured times. Thus the χ^2 method is used as described by:

$$\chi_{hyp}^2 = \frac{\Delta^2 t_{hyp}}{\sigma_{tot}^2}, \quad (3)$$

where σ_{tot}^2 is the quadratic sum of all uncertainties affecting time measurements or calculations. These are the uncertainties on track lengths (for charged particles), path lengths (for γ -ray), measured energies (due to calorimeter energy resolution) and times (due to calorimeter time resolution).

When considering *external* or *internal* events, as in section 4, the selections will be based on the chi-squared probabilities for the respective hypotheses.

3.2. Gamma tracking

Another type of time of flight calculation is possible considering only the trajectory of photons. Because of the thickness of NEMO-3 scintillators, γ -rays do not always deposit all their energy inside a single block. One photon can deposit part of its energy in a calorimeter block after Compton scattering, then hit another one and potentially more. Gamma tracking is an original and powerful analysis tool developed recently [41] in order to take this effect into account and reconstruct the complete trajectory of γ -rays inside the detector, with each step from one scintillator to the next.

When a single γ -ray is produced inside a source foil with one or more charged particles and hits several scintillators, a few PMTs measure energies without associating them to reconstructed tracks. Fig. 6(a) describes the approach presented in the previous section, where every unassociated hit is considered as having a different origin. Here, the second unassociated block is neither *internal* nor *external* and the event is excluded when selecting events for the $2e1\gamma$ channel. Using gamma tracking, the same event can be properly reconstructed as shown in Fig. 6(b): the second

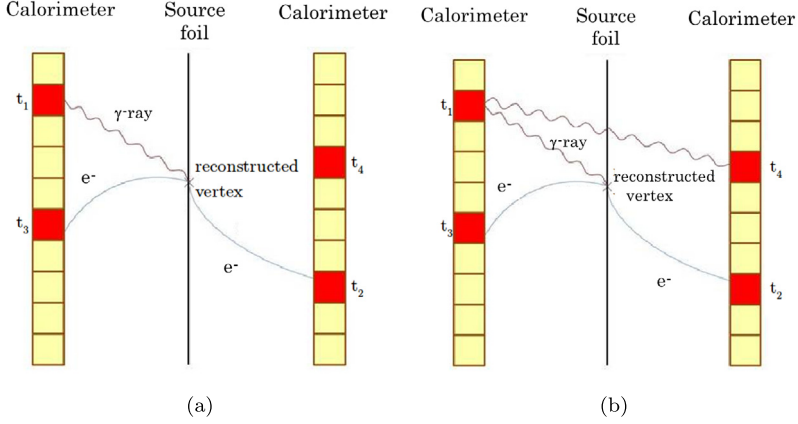


Fig. 6. Example of an event reconstruction without using gamma tracking (6(a)). Only one of the two scintillators not associated to a track is consistent with the *internal* hypothesis, the other is neither *internal* nor *external*. The same event is reconstructed with gamma tracking (6(b)), the second scintillator can be associated to the first one under the assumption of Compton scattering.

unassociated hit is paired with the first one under the assumption of Compton scattering and the event satisfies the $2e1\gamma$ channel conditions.

In this example, the complete reconstruction of the photon can be done with only one time of flight probability calculation: between the two scintillators not associated to any track. However, when events include several unassociated calorimeter blocks, every combination has to be taken into account and evaluated. In that case, before making a complete calculation, the probability of time of flight is determined for each pair of blocks in the event, with once again the χ^2 method. All the pairs are then combined to extract all possible topologies, each associated to a combined time of flight probability, using the equation:

$$\chi_{GT_{tot}}^2 = \sum_{n=1}^{n=m} \chi_{GT}^2(Block_{n-1}Block_n), \quad (4)$$

with m the total number of blocks involved in the chain of hit scintillator by a single γ -ray, $Block_{n-1}Block_n$ a pair of calorimeter blocks and $\chi_{GT}^2(Block_{n-1}Block_n)$ the χ^2 value calculated for each pair. The main drawback of this method is the computation time. To limit this effect, two additional conditions are applied: requiring an energy threshold of 150 keV for the energy deposit in each calorimeter block and only taking into account the probabilities greater than 0.1% for any combination.

Once all calculations have been performed, the topology with the highest probability is considered the most likely. This combination defines the number of photons in the event and their trajectories. The gamma tracking technique is thus key to the study of double-beta decays to excited states.

3.3. Validation of gamma tracking using calibration sources

During the data taking phase of NEMO-3, several calibration runs using three point-like ^{232}U radioactive sources, labelled 1, 2 and 3, were conducted. Their activities were measured through γ -spectrometry (HPGe detectors) and are given in Table 2, column 2. These sources are es-

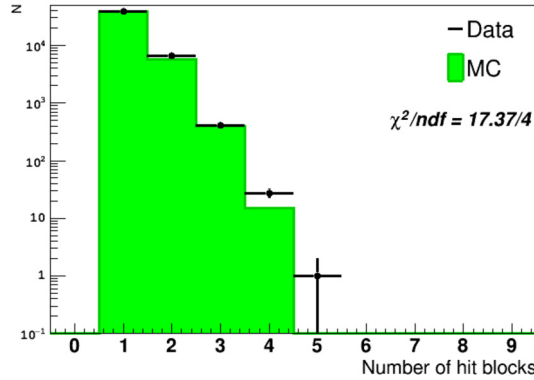


Fig. 7. Number of scintillator blocks hit by a single γ -ray according to the path reconstruction calculated with the gamma tracking method, logarithmic scale. Data were acquired using γ -rays from the ^{232}U radioactive sources and are compared to Monte-Carlo simulations.

Table 2

Comparison of the ^{232}U sources activities measured by respectively γ -spectrometry (HPGe detector) and NEMO-3 analysis without and with the gamma tracking technique using the $1e2\gamma$ topology. Uncertainties in column 2 are respectively statistics and systematics. Columns 4 and 6 present the relative differences between HPGe and analysis activities (without and with gamma tracking).

^{232}U	HPGe (Bq)	No GT act. (Bq)	Δ_{noGT} (%)	GT act. (Bq)	Δ_{GT} (%)
1	$7.79 \pm 0.04 \pm 0.21$	6.56 ± 0.08	15.8	6.98 ± 0.07	10.4
2	$15.91 \pm 0.09 \pm 0.43$	13.92 ± 0.13	12.5	14.88 ± 0.11	6.5
3	$32.76 \pm 0.17 \pm 0.89$	30.00 ± 0.17	8.4	32.11 ± 0.14	2.0

pecially well suited for gamma tracking studies since they decay to the ^{228}Th nucleus which belongs to the natural ^{232}Th radioactive decay chain. At the end of the chain, it produces a ^{208}Tl nucleus which is a β^- emitter producing at least two γ -rays: e.g. 2.615 and 0.583 MeV.

We measured the activities of the ^{232}U sources using NEMO-3 analysis with and without gamma tracking. We can then compare the results with the activities measured by HPGe detectors. The main objectives are to confirm that the use of the gamma tracking method improves the signal efficiency and reduces the systematics. Several criteria are defined to only select events involving one electron and two γ -rays ($1e2\gamma$) since 99.8% of ^{208}Tl decays produce these three particles. Using Monte-Carlo simulations, the efficiency with gamma tracking is determined to be 1.16% for this topology (compared to 0.92% without gamma tracking) while 53082 data events are selected for source 3 with an acquisition time of 107.6 hours. The same analysis without gamma tracking, conducted on the same data sample, selected only 38956 events. About 27% more events were thus selected using gamma tracking, proving that part of the events involving Compton scattering are recovered, thus improving the efficiency. Fig. 7 illustrates the number of scintillator blocks hit by a single γ -ray according to the path reconstruction calculated with the gamma tracking method. A reasonable agreement is obtained between data from the ^{232}U radioactive sources and Monte-Carlo simulations.

Furthermore, the ^{232}U sources activities obtained with gamma tracking are presented in Table 2 where they are compared to activities obtained without the use of gamma tracking and to the γ -spectrometry measurements. The interaction of γ -rays may induce low energy deposits in the bulk of the scintillator block. The energy response of the calorimeter does not take into

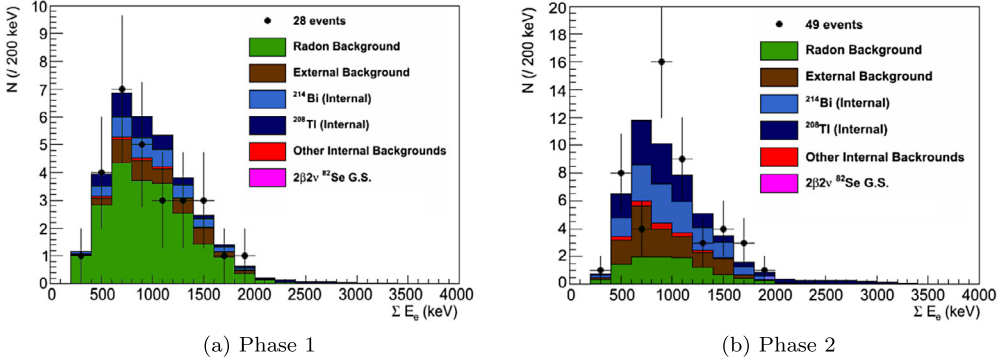


Fig. 8. Sum of the electron energies distributions in the $2e2\gamma$ channel after the preselection criteria described in the text are applied, for Phase 1 in Fig. 8(a) and Phase 2 in Fig. 8(b). Data are compared to the MC prediction for the different backgrounds. The background coming from the $2\nu\beta\beta$ ^{82}Se decay to g.s. is completely negligible and thus not visible in the two plots. (For interpretation of the colours in the figure(s), the reader is referred to the web version of this article.)

account the interaction point in the scintillator block so the effect of the energy threshold may be difficult to simulate. However, the main observation is that activities measured using gamma tracking are more consistent with the γ -spectrometry results.

However, activities measured through the analysis with gamma tracking are consistently lower than γ -spectrometry values. This difference is used as a way to estimate the systematic uncertainty induced by the use of the gamma tracking technique. The difference for sources 1, 2 and 3 are respectively 10.4%, 6.5% and 2.0% as reported in Table 2. As a conservative approach, the systematic uncertainty is considered to be 10%.

4. Double beta decay to the excited states

4.1. Two neutrino double-beta decay to 0_1^+ excited state

As mentioned in Section 1, $\beta\beta$ decays to the 0_1^+ excited state consist in the simultaneous emission (compared to the NEMO-3 time resolution) of two β and two γ particles. In order to select $2e2\gamma$ events, several criteria are applied to distinguish them from background events. The candidate events must contain two electron tracks, originating from the ^{82}Se source foil, each with an energy deposit greater than 150 keV. The distance between the tracks' intersections with the foil should fulfill Δ_{XY} less than 4 cm (perpendicular to the wires) and Δ_Z less than 8 cm (parallel to the wires) so they can be considered to have a common vertex. Two γ -rays must be reconstructed using the gamma tracking technique, each with a total energy greater than 150 keV. The timing of the calorimeter hits for electrons and γ -rays must be consistent with an *internal* event defined as those particles simultaneously emitted from their common vertex in the ^{82}Se foil. There should be no α -particle tracks and no extra reconstructed γ -rays in the event. 77 data events were selected from a total of 897,409,450 in the selenium sectors for the selected runs. Fig. 8 shows that this number is compatible with the number of background events expected when using these criteria, as well as the energy distribution of both electrons for data events and background. Using these criteria, the efficiency for the expected signal is 0.078%.

These preselection criteria can be applied when looking for events including two internal electrons and γ -rays. In order to be more specific to the $2\nu\beta\beta(0_{gs}^+ \rightarrow 0_1^+)$ decay, an optimisation is

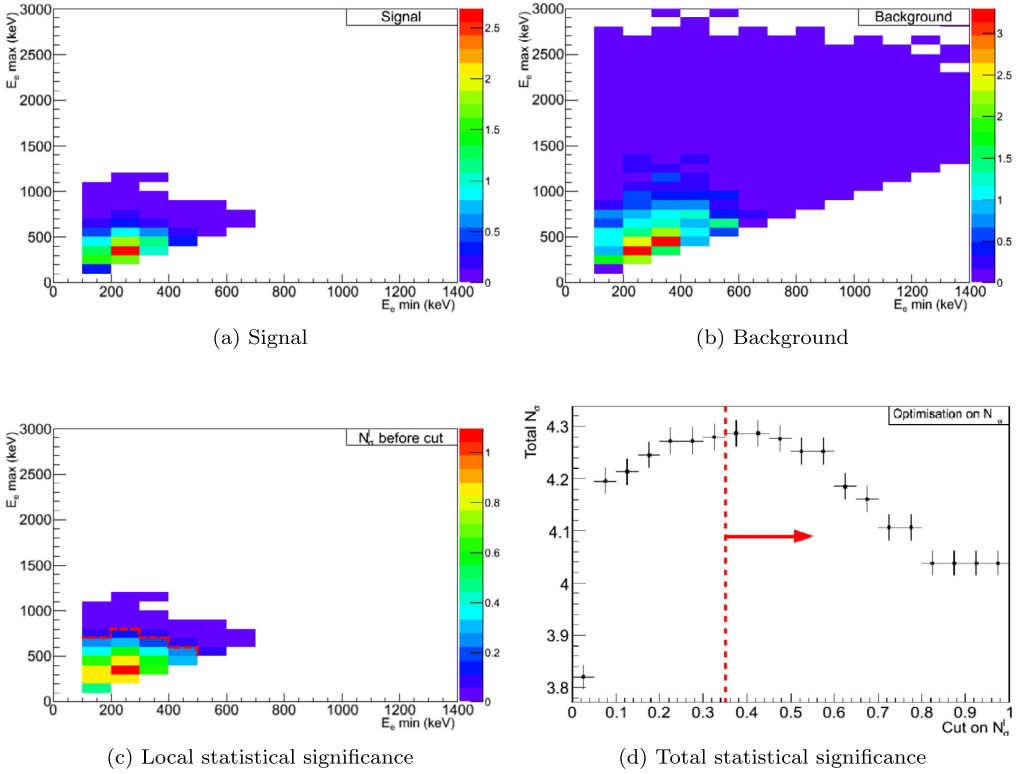


Fig. 9. The distributions of signal $2\nu\beta\beta(0_{gs}^+ \rightarrow 0_1^+)$ and background events from MC simulation are represented in Figs. 9(a) and 9(b) respectively, as a function of both electrons' individual energy. The local statistical significance N_σ^l distribution for the $2\nu\beta\beta(0_{gs}^+ \rightarrow 0_1^+)$ transition as a function of both electrons' individual energy is calculated for each bin of the 2-D histogram and represented in Fig. 9(c). The total statistical significance N_σ^t as a function of a cut on the local significance in Fig. 9(d) allows the optimisation of this cut (dotted red line). Selected bins with high local statistical significance in Fig. 9(c) are separated from the removed ones by the dotted red line.

made considering the energies of the four particles for this decay. The first energies to be optimised are the individual energies of both electrons labelled $E_{e \text{ min}}$ and $E_{e \text{ max}}$. Both energies for each event are displayed using two-dimensional histograms for signal and total background, obtained from MC simulations as shown in Figs. 9(a) and 9(b). For each bin of this two-dimensional histogram, the local statistical significance (noted N_σ^l) is calculated and displayed in Fig. 9(c). This value is defined by the following equation:

$$N_\sigma^l = \frac{S^l}{\sqrt{S^l + B^l}}, \quad (5)$$

where S^l is the signal and B^l the background in each bin. The signal is given by the $2\nu\beta\beta$ to 0_1^+ state simulation with a half-life of 3×10^{20} years which is three times higher than the $2\nu\beta\beta$ decay to the ground state half-life.

The result of the optimisation procedure was tested for several Monte Carlo samples, including $2\nu\beta\beta$ to the 0_1^+ state with various half-lives. If the half-life in the sample is different from 3×10^{20} y, the selection would not be optimal, thus the sensitivity to the $2\nu\beta\beta$ to the 0_1^+ excited

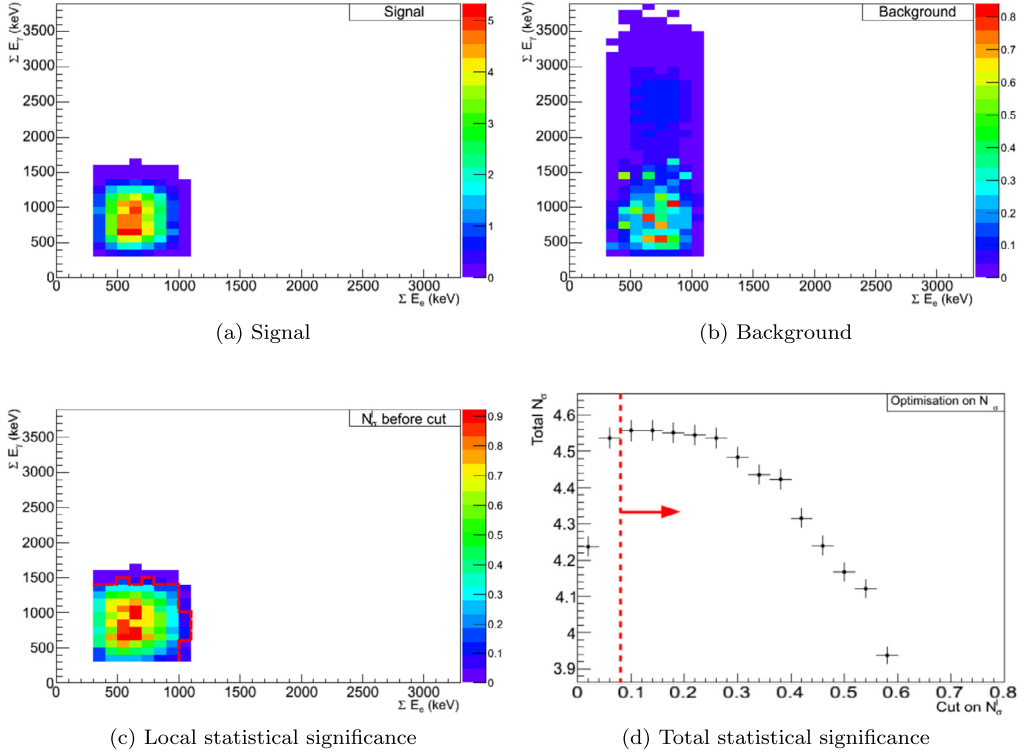


Fig. 10. Total electron energy vs total γ -rays energy distributions for $2\nu\beta\beta(0_{gs}^+ \rightarrow 0_1^+)$ signal simulation (10(a)) and background (10(b)). Local statistical significance distributions for each bin of this histogram (10(c)) with optimisation cut (dotted red line) on total statistical significance N_σ presented in Fig. 10(d).

state would be decreased. For samples with half-lives larger than 3×10^{20} y, the optimisation procedure gives a too loose selection w.r.t. optimum, increasing the background contribution. For samples with half-lives smaller than 3×10^{20} y, the optimisation procedure results in a too strict selection, reducing the signal efficiency. Even if not optimal, the selection would not bias the half-life of the sample.

A selection criterion is defined on N_σ^l for the maximised total statistical significance N_σ as presented in Fig. 9(d). N_σ is calculated over the total number of simulated signal events and expected background.

In Fig. 9(a), simulations show that the signal is stronger when the energies of the two electrons $E_{e \max}$ and $E_{e \min}$ are in the range of [300-400] and [200-300] keV, respectively. This is due to their primary kinetic energies (with a total energy shared equal or lower than 1510.2 keV) slightly affected by the loss of energy in the source foil and in the tracking chamber. Concerning the background, the simulations in Fig. 9(b) show that the energies of the two detected electrons can be much higher, up to 2.7 MeV, than those for the signal. This is due to the presence of ^{208}Tl isotope (Q -value of 4.99 MeV) which is one of the main backgrounds. Nevertheless, the optimisation is able to remove all the events with high energy electrons, typically greater than 1.1-1.2 MeV as illustrated in Fig. 9(c).

Other selections are then made on the total electron energy and total γ -rays energy and finally on the two γ -rays' individual energies as seen respectively in Figs. 10 and 11. Fig. 10 shows some

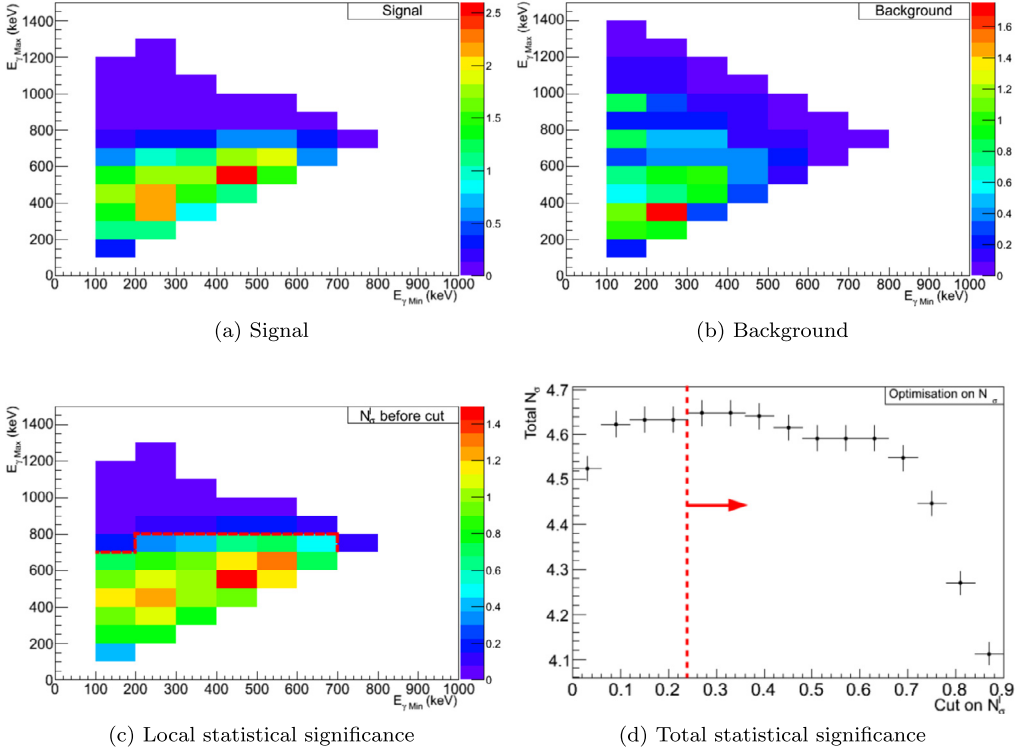


Fig. 11. γ -ray 1 energy vs γ -ray 2 energy distributions for $2\nu\beta\beta(0_{gs}^+ \rightarrow 0_1^+)$ signal simulation (11(a)) and background (11(b)). Local statistical significance distributions for each bin of this histogram (11(c)) with optimisation cut (dotted red line) on total statistical significance N_{σ} presented in Fig. 11(d).

of the features of Fig. 9, whereby the total energy of γ -rays for background can be greater than 1500 keV due to higher energy γ -rays emitted in ^{208}Tl decays (usually 2.61 and 0.58 MeV). The signal simulation fits the $2\nu\beta\beta(0_{gs}^+ \rightarrow 0_1^+)$ transition with the two electrons sharing 1512.2 keV and two γ -rays with a total energy of 1487.7 keV. The optimisation process then only selects events with γ -rays sharing less than 1600 keV, taking into account the energy resolution of the detector. Fig. 11 represents the third step of optimisation and concerns individual γ -ray energies. By this stage, most of the ^{208}Tl induced events have been removed. Simulations indicate that most of the remaining background events contain two γ -rays of [300-400] and [200-300] keV. These can be related to ^{214}Bi , since its decay can produce a 609.3 keV γ -ray and a lower energy one through bremsstrahlung, shown in Fig. 3(a). Finally, most signal events are expected to have two γ -rays of [400-500] and [500-600] keV, corresponding to the $2\nu\beta\beta(0_{gs}^+ \rightarrow 0_1^+)$ γ -rays of 711.2 and 776.5 keV.

After the complete optimisation process described here, the selection efficiency for the $2\nu\beta\beta(0_{gs}^+ \rightarrow 0_1^+)$ signal calculated from MC is 0.069% with a total of 19 selected data events.

The total electron energy distributions for Phase 1 and Phase 2 can be seen in Fig. 12 while the total γ -rays energy distributions are shown in Fig. 13. These figures also show the different background contributions that are detailed in Table 3. The largest contribution (52% in Phase 2) comes from internal contamination of the source foils and especially from ^{214}Bi . Radon is also responsible for 68% of background events during Phase 1 and was reduced to 28% in Phase 2.

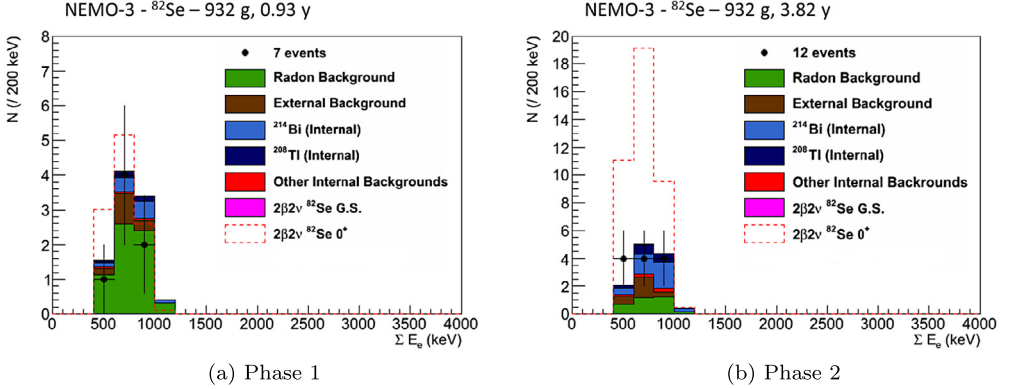


Fig. 12. Total electron energy distributions after selection for the $2\nu\beta\beta(0_{gs}^+ \rightarrow 0_1^+)$ transition, for Phase 1 in Fig. 12(a) and Phase 2 in Fig. 12(b). Experimental data events are compared to the MC simulation for the different backgrounds. The dotted red line represents the simulated signal for a half-life of 3×10^{20} years.

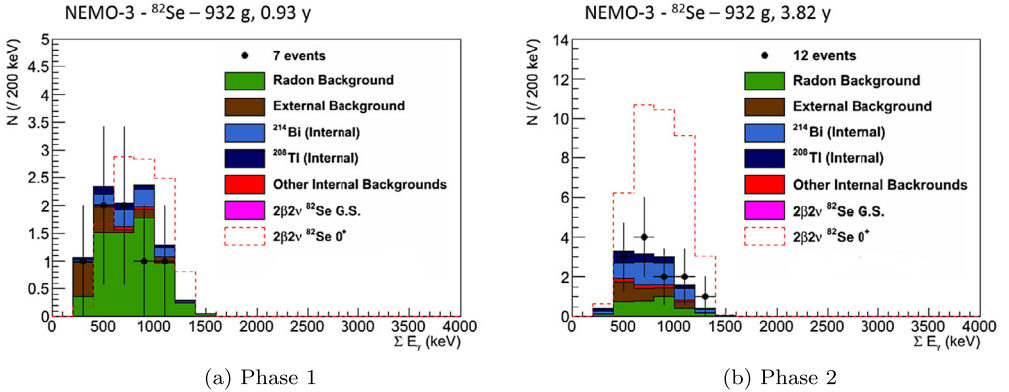


Fig. 13. Total γ -rays energy distributions after selection for the $2\nu\beta\beta(0_{gs}^+ \rightarrow 0_1^+)$ transition, for Phase 1 in Fig. 13(a) and Phase 2 in Fig. 13(b). Experimental data events are compared to the MC simulation for the different backgrounds. The dotted red line represents the simulated signal with a half-life of 3×10^{20} years.

The external backgrounds account for 21% of the total expected background despite the strong criteria used to ensure that only internal events are selected.

It is also shown that there is a good compatibility with background and data events. In the absence of a significant excess of data versus background, a limit has been set. This can be performed using the following equation:

$$T_{1/2} > \epsilon \times N_{nuc} \times \ln(2) \times (t_{acq} - t_d) \times \frac{1}{N_{ex}}, \quad (6)$$

where ϵ is the detection efficiency, N_{nuc} the number of ^{82}Se nuclei, t_{acq} and t_d the acquisition and dead time respectively and N_{ex} the number of signal events that can be excluded. The method used here to obtain this last number is the CLs method [42], that takes into account the shape of the expected signal and backgrounds as well as the number of data events and several statistical and systematical uncertainties. The systematics are detailed in Table 4. Considering then the

Table 3

Numbers of expected background events from the main background sources in both Phases and their contribution to the total number of expected background events for the $2e2\gamma$ channel after optimisation for the study of $2\nu\beta\beta(0_{gs}^+ \rightarrow 0_1^+)$ decay. 0.93 year of data taking are considered for Phase 1 and 3.82 years for Phase 2. The quoted uncertainties represent the statistical and systematic uncertainties, respectively. The number of selected data events for each phase is also presented.

		Expected events		Contribution to total background (%)	
		Phase 1	Phase 2	Phase 1	Phase 2
Internal	^{214}Bi	$1.14 \pm 0.05 \pm 0.12$	$4.28 \pm 0.09 \pm 0.43$	12.1	36.1
	^{208}Tl	$0.43 \pm 0.02 \pm 0.07$	$1.58 \pm 0.04 \pm 0.23$	4.6	13.3
	Others	$0.06 \pm 0.03 \pm 0.01$	$0.29 \pm 0.14 \pm 0.02$	0.6	2.4
	Total	$1.64 \pm 0.07 \pm 0.20$	$6.15 \pm 0.49 \pm 0.68$	17.3	51.8
Radon		$6.44 \pm 0.63 \pm 0.65$	$3.26 \pm 0.31 \pm 0.33$	68.0	27.5
External	^{214}Bi	$0.38 \pm 0.19 \pm 0.04$	$1.49 \pm 0.75 \pm 0.15$	4.0	12.5
	^{208}Tl	$0.29 \pm 0.10 \pm 0.03$	$0.18 \pm 0.06 \pm 0.02$	2.9	1.6
	Others	$0.74 \pm 0.37 \pm 0.08$	$0.78 \pm 0.39 \pm 0.08$	7.8	6.6
	Total	$1.39 \pm 0.43 \pm 0.15$	$2.46 \pm 0.05 \pm 0.85$	14.7	20.7
Total background		$9.47 \pm 0.77 \pm 1.00$	$11.87 \pm 1.17 \pm 1.26$	100.0	100.0
Data events		7	12	–	–

Table 4

Values of the 1σ systematic uncertainties included in the calculation of the limits on $2\nu\beta\beta$ decay to excited states and their methods of estimate. The estimated uncertainties come from the comparison of the activity measurements of calibration sources between NEMO-3 and HPGe (^{232}U , ^{207}Bi , ^{90}Y), the uncertainties on background measurements and uncertainties specific to the detector or ^{82}Se sources.

Systematic	Estimated uncertainty (%)	Method of estimate
Gamma tracking	10.4	^{232}U vs HPGe
Energy calibration	1	Neutron sources
$2\nu\beta\beta$ efficiency	5	^{207}Bi vs HPGe
^{82}Se mass	0.5	Uncertainty on mass and enrichment
Energy loss in foil	1	Neutron sources
bremsstrahlung	1	^{90}Y source analysis
Ext. BG activities	10	Variation from background model
Radon BG activities	10	$1e1\alpha$ vs $1e1\gamma$
Int. BG activities (excl. ^{208}Tl & ^{214}Bi)	4	^{207}Bi $1eN\gamma$ vs $2e$ (^{40}K & ^{234m}Pa meas. in $1e$)
Int. ^{214}Bi activity	10	$1e1\alpha$ vs. $1e1\gamma$
Int. ^{208}Tl activity	15	NEMO-3 vs HPGe
$2\nu\beta\beta$ activity	1	Statistical uncertainty

4.42 kg.y exposure, the 0.069% efficiency, the 21.4 expected background events and 19 data events, the limit on the $2\nu\beta\beta(0_{gs}^+ \rightarrow 0_1^+)$ decay half-life for ^{82}Se is, at 90% CL:

$$T_{1/2}^{2\nu}(^{82}\text{Se}, 0_{gs}^+ \rightarrow 0_1^+) > 1.3 \times 10^{21} \text{ y.} \quad (7)$$

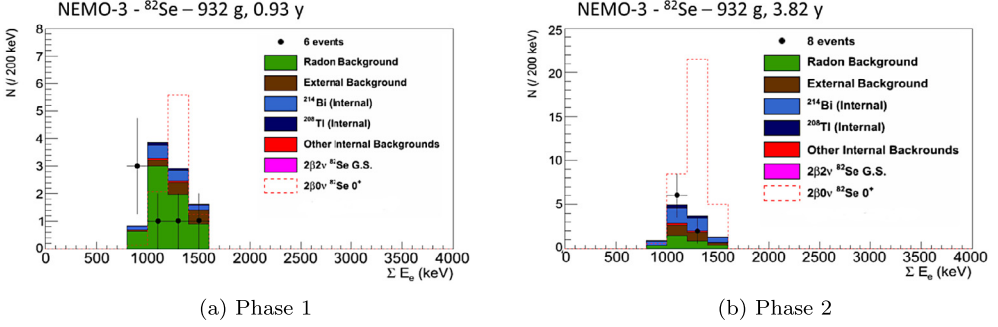


Fig. 14. Total electron energy distributions after selection for the $0\nu\beta\beta$ ($0_{gs}^+ \rightarrow 0_1^+$) transition, for Phase 1 in Fig. 14(a) and Phase 2 in Fig. 14(b). Experimental data events are compared to the MC simulation for the different backgrounds. The dotted red line represents the simulated signal with a half-life of 3×10^{21} years.

This result is compatible with limit of 3×10^{21} y from Ref. [37] and lower than the value published by the LUCIFER collaboration, who determined a limit of 3.4×10^{22} y [31] for the $(2\nu + 0\nu)\beta\beta$ processes. However, the NEMO-3 technique precisely identifies the event topology and could thus independently study $2\nu\beta\beta$ and $0\nu\beta\beta$ processes.

4.2. Neutrinoless double beta decay to 0_1^+ excited state

The search for $0\nu\beta\beta$ events is carried out similarly to what has been done for the $2\nu\beta\beta$ decay. The preselection criteria are the same as what is described in the first part of Section 4.1. However, in the $0\nu\beta\beta$ process through the $0_{gs}^+ \rightarrow 0_1^+$ transition, the two electrons do not share energy with neutrinos contrary to the $2\nu\beta\beta$ decay. The signal efficiency using these criteria increases by a factor 10 compared to the $2\nu\beta\beta$ process. It reaches 0.71%, as higher energy electrons are expected. The selection has then been optimised with these energies, taking into account a simulated signal with a half-life of 3×10^{21} years and using the same method as the one described in Section 4.1. Applying those criteria, the final selection efficiency for this signal is 0.69% and 14 data events are selected.

The total electron energy distributions for Phase 1 and Phase 2 are shown in Fig. 14. The background composition is similar to what was presented in Table 3 with a high radon contribution. The details are presented in Table 5. The total γ -rays energy distributions are shown in Fig. 15.

As for the $2\nu\beta\beta$ ($0_{gs}^+ \rightarrow 0_1^+$) transition, data is consistent with background-only predictions so a limit has to be set on the half-life of the $0\nu\beta\beta$ ($0_{gs}^+ \rightarrow 0_1^+$) process. The method used to calculate such a limit remains the CLs method. With the 20.1 background events and the statistical and systematic uncertainties, the limit on the $0\nu\beta\beta$ ($0_{gs}^+ \rightarrow 0_1^+$) decay half-life for ^{82}Se (at 90% CL) is:

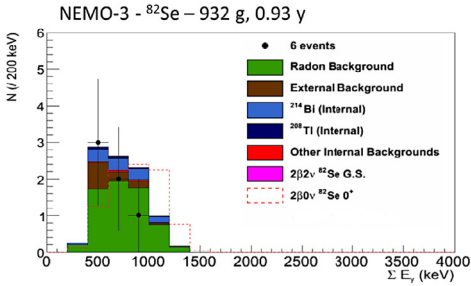
$$T_{1/2}^{0\nu}(^{82}\text{Se}, 0_{gs}^+ \rightarrow 0_1^+) > 2.3 \times 10^{22} \text{ y.} \quad (8)$$

This result is given for the $0\nu\beta\beta$ ($0_{gs}^+ \rightarrow 0_1^+$) transition for ^{82}Se , separately from $2\nu\beta\beta$ ($0_{gs}^+ \rightarrow 0_1^+$). It is compatible with limit of 3.4×10^{22} y and 8.1×10^{22} y obtained in the LUCIFER experiment [31] for the $(2\nu + 0\nu)\beta\beta$ processes and CUPID-0 [32] experiment. According to the mass mechanism, a Majorana neutrino is exchanged during such a process and therefore a limit can also be set on the effective mass of the neutrino using the following equation:

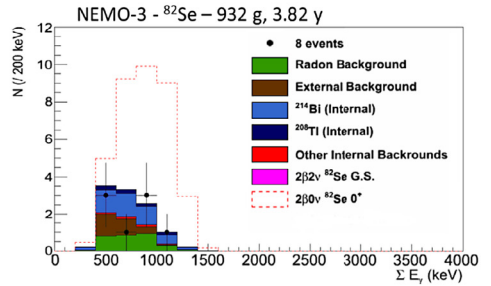
Table 5

Numbers of expected background events from the main background sources in both Phases and their contribution to the total number of expected background events for the $2e2\gamma$ channel after optimisation for the study of $0\nu\beta\beta(0_1^+ \rightarrow 0_2^+)$ decay. 0.93 years of data taking are considered for Phase 1 and 3.82 years for Phase 2. The quoted uncertainties represent the statistical and systematic uncertainties, respectively. The number of selected data events for each phase is also presented.

		Expected events		Contribution to total background (%)	
		Phase 1	Phase 2	Phase 1	Phase 2
^{82}Se foils	^{214}Bi	$1.25 \pm 0.05 \pm 0.13$	$4.57 \pm 0.10 \pm 0.46$	13.5	41.9
	^{208}Tl	$0.24 \pm 0.01 \pm 0.03$	$0.82 \pm 0.02 \pm 0.12$	2.6	7.6
	Others	$0.02 \pm 0.01 \pm 0.01$	$0.07 \pm 0.03 \pm 0.01$	0.2	0.6
	Total	$1.50 \pm 0.06 \pm 0.17$	$5.46 \pm 0.11 \pm 0.59$	16.3	50.1
Radon		$6.50 \pm 0.64 \pm 0.65$	$2.97 \pm 0.27 \pm 0.30$	70.4	27.3
Detector	^{214}Bi	$0.45 \pm 0.22 \pm 0.05$	$1.33 \pm 0.62 \pm 0.14$	4.9	12.3
	^{208}Tl	$0.79 \pm 0.09 \pm 0.08$	$1.13 \pm 0.14 \pm 0.12$	8.5	10.3
	Others	0	0	0	0
	Total	$1.24 \pm 0.24 \pm 0.13$	$2.46 \pm 0.62 \pm 0.26$	13.4	22.6
Total background		$9.24 \pm 0.69 \pm 0.95$	$10.89 \pm 0.69 \pm 1.15$	100.0	100.0
Data events		6	9	–	–



(a) Phase 1



(b) Phase 2

Fig. 15. Total γ -rays energy distributions after selection for the $0\nu\beta\beta(0_{gs}^+ \rightarrow 0_1^+)$ transition, for Phase 1 in Fig. 15(a) and Phase 2 in Fig. 15(b). Experimental data events are compared to the MC simulation for the different backgrounds. The dotted red line represents the simulated signal with a half-life of 3×10^{21} years.

$$\frac{1}{(T_{1/2}^{0\nu})_{MM}} = G^{0\nu}(Q_{\beta\beta}, Z) g_A^4 |M^{0\nu}|^2 \left| \frac{m_{\beta\beta}}{m_e} \right|^2, \quad (9)$$

where $G^{0\nu}(Q_{\beta\beta}, Z)$ is the phase space factor given in [43] for the transition, $g_A = 1.27$ and $M^{0\nu}$ the nuclear matrix element [12,13,44,45]. The limit that can be set on the effective neutrino mass is $m_{\beta\beta} < [42 - 239]$ eV.

5. Summary and conclusions

4 Using an innovative gamma tracking technique, the NEMO-3 data set was analysed to search for $\beta\beta$ decays of ^{82}Se to the excited states of ^{82}Kr with a 4.42 kg·y exposure. No evidence for the $2\nu\beta\beta$ process was found and thus an upper limit on the decay half-life was set at 90% CL: $T_{1/2}^{2\nu}(^{82}\text{Se}, 0_{gs}^+ \rightarrow 0_1^+) > 1.3 \times 10^{21}$ y. This result can nevertheless help to constrain theoretical QRPA models presented in [33,34,46].

The analysis of the $0\nu\beta\beta$ decay to excited states was conducted in a similar fashion and, as once again no extra events were observed over the expected background, an upper limit was set at 90% CL: $T_{1/2}^{0\nu}(^{82}\text{Se}, 0_{gs}^+ \rightarrow 0_1^+) > 2.3 \times 10^{22}$ y. These results are obtained for the first time with a detector which reconstructs each particle individually in the final state.

This analysis performed with ^{82}Se in NEMO-3 will also provide useful information for the next-generation SuperNEMO experiment which will host 100 kg of ^{82}Se , such as optimisation of the selected events and identification of the main background contributions.

In parallel with its search for $0\nu\beta\beta$ decay to the ground state, SuperNEMO will also look for the $2\nu\beta\beta$ and $0\nu\beta\beta$ decays to excited states with major improvements. Using thicker scintillators, the sensitivity to γ -rays and efficiency to $2\nu\beta\beta$ and $0\nu\beta\beta(0_{gs}^+ \rightarrow 0_1^+)$ transitions will be enhanced. Backgrounds will also be reduced: more than a factor 30 for radon and a factor 100 for ^{214}Bi and ^{208}Tl . The expected sensitivities for SuperNEMO are respectively $\sim 10^{23}$ y and $\sim 10^{24}$ y for the $2\nu\beta\beta$ and $0\nu\beta\beta(0_{gs}^+ \rightarrow 0_1^+)$ half-lives. A first module, called Demonstrator, with 7 kg of ^{82}Se is undergoing commissioning and will start taking data in 2019. Its goal is to reach a sensitivity on the $0\nu\beta\beta$ half-life of 5×10^{24} y in 17.5 kg·y exposure with the demonstration of a “zero”-background experiment [47].

Declaration of competing interest

The authors declare that they have no known competing financial interests or personal relationships that could have appeared to influence the work reported in this paper.

Acknowledgements

We thank the staff of the Modane Underground Laboratory for their technical assistance in running the experiment. We acknowledge support by the Grant Agency of the Czech Republic (grant number EF16 013/0001733), CNRS/IN2P3 in France, RFBR in Russia (Project No.19-52-16002 NCNIL a), APVV in Slovakia (Project No. 15-0576), STFC in the UK and NSF in the USA.

References

- [1] R. Arnold, et al., NEMO-3 Collaboration, Phys. Rev. D 92 (2015) 072011, <https://doi.org/10.1103/PhysRevD.92.072011>, <https://link.aps.org/doi/10.1103/PhysRevD.92.072011>.
- [2] C. Alduino, et al., CUORE Collaboration, Phys. Rev. Lett. 120 (2018) 132501, <https://doi.org/10.1103/PhysRevLett.120.132501>, <https://link.aps.org/doi/10.1103/PhysRevLett.120.132501>.
- [3] M. Agostini, et al., GERDA Collaboration, Phys. Rev. Lett. 120 (2018) 132503, <https://doi.org/10.1103/PhysRevLett.120.132503>, <https://link.aps.org/doi/10.1103/PhysRevLett.120.132503>.
- [4] A. Gando, et al., KamLAND-Zen Collaboration, Phys. Rev. Lett. 117 (2016) 082503, <https://doi.org/10.1103/PhysRevLett.117.082503>, <https://link.aps.org/doi/10.1103/PhysRevLett.117.082503>.
- [5] D.L. Lincoln, et al., Phys. Rev. Lett. 110 (2013) 012501.

- [6] J.W. Beeman, et al., LUCIFER Collaboration, *Adv. High Energy Phys.* 2013 (2013) 237973.
- [7] O. Azzolini, et al., *Eur. Phys. J. C* 78 (2018) 428.
- [8] R. Arnold, et al., *Eur. Phys. J. C* 70 (2010) 927–943.
- [9] R. Arnold, et al., NEMO-3 Collaboration, *Eur. Phys. J. C* 78 (2018) 821.
- [10] O. Azzolini, et al., *Phys. Rev. Lett.* 123 (2019), <https://doi.org/10.3390/PhysRevLett.123.032501>.
- [11] J. Menéndez, A. Poves, E. Caurier, F. Nowacki, *Nucl. Phys. A* 818 (2009) 139–151, <https://doi.org/10.1016/j.nuclphysa.2008.12.005>, <http://www.sciencedirect.com/science/article/pii/S0375947408008233>.
- [12] J. Barea, J. Kotila, F. Iachello, *Phys. Rev. C* 91 (2015) 034304, <https://doi.org/10.1103/PhysRevC.91.034304>, <https://link.aps.org/doi/10.1103/PhysRevC.91.034304>.
- [13] J. Hyvärinen, J. Suhonen, *Phys. Rev. C* 93 (2016) 064306, <https://doi.org/10.1103/PhysRevC.93.064306>, <https://link.aps.org/doi/10.1103/PhysRevC.93.064306>.
- [14] M.J. Dolinski, et al., *Annu. Rev. Nucl. Part. Sci.* 69 (2019) 219–251, <https://www.annualreviews.org/doi/10.1146/annurev-nucl-101918-023407>.
- [15] A.S. Barabash, *Nucl. Phys. A* 393 (2015) 593, <https://doi.org/10.1016/j.nuclphysa.2015.01.001>, <https://www.sciencedirect.com/science/article/pii/S037594741500010X?via%3Dihub>.
- [16] A.S. Barabash, arXiv:1907.06887 [nucl-ex].
- [17] R. Arnold, et al., NEMO-3 Collaboration, *Phys. Rev. Lett.* 95 (2005) 182302, <https://doi.org/10.1103/PhysRevLett.120.132501>, <https://link.aps.org/doi/10.1103/PhysRevLett.120.132501>.
- [18] R. Arnold, et al., *Nucl. Phys. A* 925 (2014) 25–36.
- [19] R. Arnold, et al., *Nucl. Phys. A* 781 (2007) 209–226.
- [20] R. Arnold, et al., NEMO-3 Collaboration, *Phys. Rev. D* 94 (2016) 072003, <https://doi.org/10.1103/PhysRevD.94.072003>, <https://link.aps.org/doi/10.1103/PhysRevD.94.072003>.
- [21] A.S. Barabash, Ph. Hubert, A. Nachab, V.I. Umatov, *Phys. Rev. C* 79 (2009) 45501.
- [22] M.F. Kidd, J.H. Esterline, S.W. Finch, W. Tornow, *Phys. Rev. C* 90 (2014) 055501.
- [23] J. Kotila, F. Iachello, *Phys. Rev. C* 85 (2012) 034316.
- [24] A.S. Barabash, *AIP Conf. Proc.* 1894 (2017) 020002.
- [25] A.S. Barabash, *Phys. Lett. B* 345 (1995) 408–413.
- [26] A.S. Barabash, *Phys. At. Nucl.* 62 (1999) 2039–2043.
- [27] L. De Braekeleer, M. Hornish, A.S. Barabash, V. Umatov, *Phys. Rev. Lett.* 86 (2001) 3510–3513.
- [28] M.F. Kidd, et al., *Nucl. Phys. A* 821 (2009) 251–261.
- [29] P. Belli, et al., *Nucl. Phys. A* 846 (2010) 143–156.
- [30] S. Blondel, Optimisation du blindage contre les neutrons pour le démonstrateur de SuperNEMO et analyse de la double désintégration β du néodyme-150 vers les états excités du samarium-150 avec le détecteur NEMO 3, PhD thesis, Université Paris Sud, 2013.
- [31] J.W. Beeman, et al., LUCIFER Collaboration, *Eur. Phys. J. C* 75 (2015) 591.
- [32] O. Azzolini, et al., CUPID-0 Collaboration, *Eur. Phys. J. C* 78 (2018) 888.
- [33] M. Aunola, J. Suhonen, *Nucl. Phys. A* 602 (1996) 133–166.
- [34] J. Suhonen, O. Civitarese, *Phys. Rep.* 300 (1998) 123–214.
- [35] R. Arnold, C. Augier, A. Bakalyarov, J. Baker, A. Barabash, et al., *Nucl. Instrum. Methods Phys. Res., Sect. A* 536 (2005), <https://doi.org/10.1016/j.nima.2004.07.194>, arXiv:physics/0402115.
- [36] J.K. Tuli, E. Brown, *Nucl. Data Sheets* 157 (2019) 260.
- [37] J. Suhonen, J. Toivanen, A.S. Barabash, I.A. Vanushin, V.I. Umatov, R. Gurriarán, F. Hubert, P. Hubert, *Z. Phys. A, Hadrons Nucl.* 358 (1997) 297–301, <https://doi.org/10.1007/s002180050333>.
- [38] J. Argyriades, et al., NEMO-3 Collaboration, *Nucl. Instrum. Methods Phys. Res., Sect. A* 606 (2009) 449–465, <https://doi.org/10.1016/j.nima.2009.04.011>, arXiv:0903.2277.
- [39] O. Ponkratenko, V. Tretyak, Y. Zdesenko, *Phys. At. Nucl.* 63 (2000) 1282.
- [40] R. Brun, F. Bruyant, M. Maire, A. McPherson, P. Zancarini, CERNDD-EE-84-1, 1987.
- [41] C. Hugon, Analyse des données de l’expérience NEMO3 pour la recherche de la désintégration double bêta sans émission de neutrinos. Étude des biais systématiques du calorimètre et développement d’outils d’analyse, PhD thesis, Université Paris Sud, 2012.
- [42] T. Junk, *Nucl. Instrum. Methods Phys. Res., Sect. A* 434 (1999) 435–443, [https://doi.org/10.1016/S0168-9002\(99\)00498-2](https://doi.org/10.1016/S0168-9002(99)00498-2), arXiv:hep-ex/9902006.
- [43] M. Mirea, T. Pahomi, S. Stoica, *Rom. Rep. Phys.* 67 (2015) 872–889.
- [44] F. Šimkovic, M. Nowak, W.A. Kamiński, A.A. Raduta, A. Faessler, *Phys. Rev. C* 64 (2001) 035501.
- [45] J. Menéndez, A. Poves, E. Caurier, F. Nowacki, *Nucl. Phys. A* 818 (2009) 139–151.
- [46] J. Toivanen, J. Suhonen, *Phys. Rev. C* 55 (1997) 2314–2323.
- [47] F. Perrot (on behalf of the SuperNEMO collaboration), *PoS (ICHEP 2016) (2016) 499*.